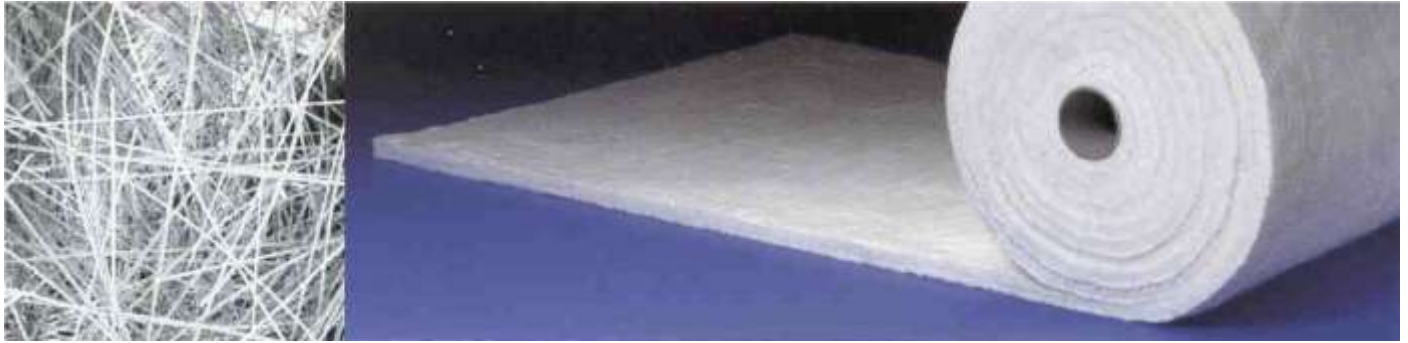


REFRASIL® BLANKET 2000 (RB2000)

High Temperature Blanket Insulation



DESCRIPTION – REFRASIL® BLANKET 2000 is a lightweight, high temperature, insulation composed of 100% amorphous silica fiber that has been specially treated during the manufacturing process to reduce residual shrinkage at elevated temperatures. It has the following unique properties:

- Zero shot content
- Binder free
- Outstanding chemical resistance – especially acids
- Contains no asbestos or refractory ceramic fiber
- Excellent sound absorption
- Highly resilient
- Not water soluble
- Low Shrinkage
- Non-respirable

STANDARD SIZES

Thickness Roll Width

1/8" (3mm)	33" (≈84cm)
1/4" (6mm)	33" (≈84cm)
1/2" (12mm)	33" (≈84cm)
1" (25mm)	33" (≈84cm)

* Special sizes available upon request

DENSITY

10.5 – 12.0 lbs./ft³ (168 – 192 kg/m³)

FIBER PROPERTIES

Fiber diameter: 6-13 microns Fiber length: 2" - 4" avg. (50-102 mm)

information, contact the HITCO Carbon Composites Materials & Fabrication Department at (800) 421-5444, or visit our website at www.hitco.com

10/2010

MAXIMUM RECOMMENDED USE TEMPERATURE

For intermittent use: 2200° F (1200° C) For
continuous use: 2000° F (1090° C)
Melting point: 2900°F (1593°C)

TENSILE STRENGTH (ASTM C686)

CHEMICAL ANALYSIS

Silica (SiO₂) - > 93.5% min
Alumina (Al₂O₃) - 4.0%
Others - < 1.0%

PERMANENT LINEAR CHANGE (ASTM C356)

	% shrinkage
24 hrs. at 1000° F (540° C)	0.05%
24 hrs. at 1200° F (650° C)	0.06%
24 hrs. at 1400° F (760° C)	0.06%
24 hrs. at 1600° F (870° C)	0.10%
24 hrs. at 1800° F (980° C)	0.30%
24 hrs. at 2000° F (1090° C)	0.70%

THERMAL CONDUCTIVITY (ASTM C177)

		Mean Temperature	
500° F (260° C)	0.45	0.054	
1000° F (540° C)	0.78	0.094	Btu-
1500° F (820° C)	1.39	0.166	in./hr.ft. ² °F
1800° F (980° C)	1.93	0.231	Kcal- m/hr.sq.m °C

The test data shown are based on average results on production samples and are subject to normal variation on individual tests. Therefore, the above listed data should not be taken as established maximum or minimum specifications. For technical support or specific application

